

## 2019 PhysicsBowl Results

Dear Physics Teachers,

Thank you for having your students participate in this year's AAPT PhysicsBowl contest! This year there were more than 7100 students participating from 307 schools from Australia, Canada, Costa Rica, Guam, Hong Kong, Indonesia, the Republic of Korea, the Netherlands, the Philippines, Serbia, Singapore, Switzerland, Turkey, the United Kingdom, and the United States, as well as 341 schools participating from China.

With the addition of the large number of Chinese schools, the contest is in two parts with Regions 00-14 competing for prizes from AAPT while ASDAN China is coordinating the contest in China. As a result, for simplicity in trying to read the long lists, there are three files: the list of winners in Regions 00-14, the list of winners in Regions 15-19, and a list of the top students/teams from all regions in both divisions.

Instructors from Regions 00-14 can obtain the scores of their students from the AAPT website. That link will be provided to you in an email from the national office. Please realize that we were able to retrieve some scores that were disqualified for improperly recording the required information, this this was done after-the-fact. If the information was not encoded correctly, the student was automatically disqualified from winning prizes even though we may be able to link that student to your code now. Some students provided no codes, the wrong regions, no name, just a last name, etc. There area a lot of records and we cannot go back and fill in missing information. While it is unfortunate to disqualify anyone, these are the rules of the contest. Sadly, some very high scores were disqualified. If you are still missing a student's score, please email [science@seedasdan.org](mailto:science@seedasdan.org) with student information (CEEB, teacher codes, etc.) and we can try to find the information.

Information is being provided to ASDAN China to find scores from Regions 15-19.

We will, as always, be trying to improve the contest and we look forward to your participation in 2020.

The statistics from this year's contest are shown below.

*Division 1* had an average score of 16.3. Statistically, the easiest question was **#1** (96.0% correct) while the most difficult question was **#39** (12.5% correct). There were about 4900 exams scored and 553 teams.

*Division 2* had an average score of 16.8. Statistically, the easiest question was **#26** (85.3% correct) while the most difficult question was **#39** (15.8% correct). There were about 2200 exams scored and 430 teams.

The production of a 40-question contest that has a small percentage of very high scores while still not being overly difficult to discourage the majority of students is a very challenging task. As in previous years and in an effort to continually improve this opportunity for students, adjustments will be made to future exams.

### **Statistics for exam**

Average Score for Division 1 = **16.3** with a standard deviation of **5.2**

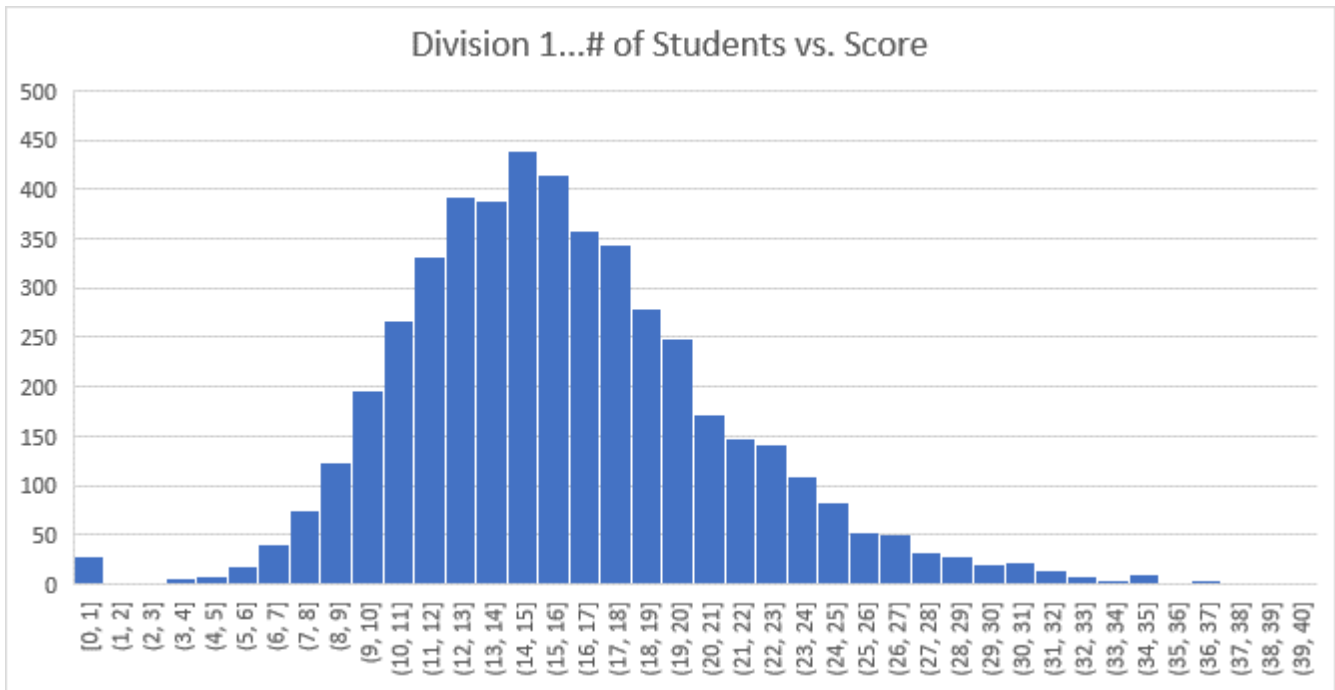
Average Score for Division 2 = **16.8** with a standard deviation of **6.4**

We look forward to having you participate in next year's contest! Please spread the word and encourage your colleagues to have their students participate in future contests.

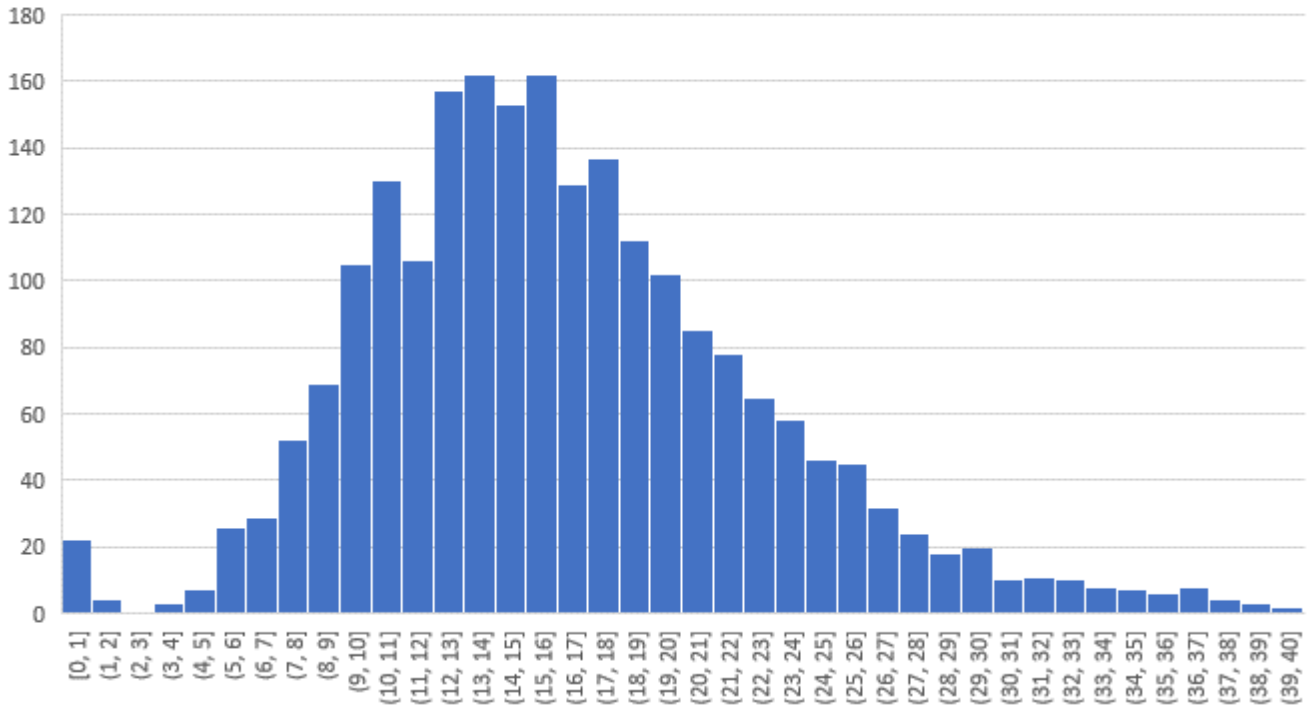
Sincerely,



Jon P. Anderson  
PhysicsBowl Academic Coordinator  
Clinical Assistant Professor/Master Teacher, FIUteach  
STEM Transformation Institute, VH 160A  
Florida International University, MMC  
Miami, FL 33199



Division 2...# of Students vs. Score



## TOP 100 OVERALL DIVISION 1 SCORES

Rank	Region	Score	First Name	Last Name	School	Province/State
1	19	40	XINWEI	KE	Chongqing Yucai Secondary School	Chongqing
2	17	38	YUCHEN	SUN	Nanjing Foreign Language School	Jiangsu
3	00	37	CHRIS	LEE	Olympiad Academia	NY
4	04	37	ALVIN	PENG	Gauss School of Math and Science	NJ
5	17	37	YANZHIR	LI	Changzhou Senior High School of Jiangsu Province	Jiangsu
6	13	36	JEFFREY	XU	Saratoga High School	CA
7	02	35	Ethan	Hu	Marc Garneau C.I.	ON
8	02	35	Zhi Yang	Chen	Victoria Park Collegiate Institute	ON
9	02	35	Henry	Guo	Ay Jackson Secondary School	ON
10	03	35	Vincent	Xu	Darien High School	CT
11	04	35	ADITH	SUNDRAM	Gauss School of Math and Science	NJ
12	13	35	MILAN	GANAI	Lynbrook HS	CA
13	14	35	VEDANTHA	VENKATAPATHY	Bellevue College North Campus	WA
14	16	35	ZHENYAO	JIANG	Huanggang Middle School Guangzhou Campus	Guangdong
15	17	35	RICHARD	ZHANG	Shanghai High School International Division	Shanghai
16	19	35	ZEYUAN	ZHAO	International Department of High School Affiliated To Southwest University	Chongqing
17	02	34	JERRY	JIAO	Olympiads School	ON
18	15	34	YICHEN	QIU	Capital Normal University High School	Beijing
19	17	34	HAITAO	XU	Suzhou High School-SIP	Jiangsu
20	17	34	LI	GU	Shanghai Foreign Language School	Shanghai
21	00	33	TAEYANG	PARK	Olympiad Academia	NY
22	02	33	DANIEL	YANG	Olympiads School	ON
23	03	33	BENJAMIN	WANG	Stamford Polytechnic	CT
24	04	33	IAN	WANG	Gauss School of Math and Science	NJ
25	13	33	ROHAN	KUMAR	Saratoga High School	CA
26	15	33	GUANKAI	ZHAI	Jining Confucius International School	Shandong


**AAPT PHYSICS BOWL 2019**  
 PHYSICS EDUCATION

27	17	33	YIZHE	WANG	Nanjing Foreign Language School	Jiangsu
28	00	32	SEOEONG	KWAG	Olympiad Academia	NY
29	00	32	GAVIN	YU	SpringLight Education Institute	CA
30	04	32	ALAN	HSU	Gauss School of Math and Science	NJ
31	07	32	ALEX	XU	Troy High School	MI
32	12	32	AKSH	GARG	Palos Verdes Peninsula High School	CA
33	15	32	RUICHENG	WEN	Capital Normal University High School	Beijing
34	15	32	ZIQIAN	JIN	The Experimental High School Attached to Beijing Normal University	Beijing
35	17	32	YICHUAN	LUO	Nanjing Foreign Language School	Jiangsu
36	17	32	WENSHU	GAO	Shanghai Foreign Language School	Shanghai
37	17	32	ZIWEN	YUAN	Nanjing Foreign Language School	Jiangsu
38	17	32	ZHIMING	ZHANG	Nanjing Foreign Language School	Jiangsu
39	18	32	HAOZHE	XUOHEL	Hefei No.8 Senior High School	Anhui
40	18	32	HELIN	TANG	Zhengzhou Foreign Language School	Henan
41	19	32	JIAYUE	WANG	Nantong Middle School of Jiangsu Province	Jiangsu
42	01	31	DAVID	CHIIDCHI	Science Academy of South TX	TX
43	03	31	WALDEN	YAN	Avon High School	CT
44	09	31	SAMUEL	COHEN		FL
45	12	31	ETHAN	LU	Arcadia High School	CA
46	12	31	JASON	CHAN	Arcadia High School	CA
47	13	31	MYUNGSUH	CHOI	Gachun University	CA
48	14	31	Hai Linh	Nguyen	National Mathematics and Science College	England
49	15	31	CANCAN	HUANG	Jining Confucius International School	Shandong
50	15	31	RUIAN	WANG	Jinan Foreign Language School	Shandong
51	15	31	ZHENG	LIAO	Beijing 21st Century International School	Beijing
52	15	31	RUIZET	MA	The Experimental High School Attached to Beijing Normal University	Beijing
53	15	31	XUSHU	WANG	RDFZ ICC	Beijing
54	15	31	YUE	ZHOU	Shandong Experimental High School	Shandong


**AAPT PHYSICS BOWL 2019**  
 PHYSICS EDUCATION

55	15	31	YUNRUI	GUO	Capital Normal University High School	Beijing
56	17	31	YANGHENG	JIZHE	Shanghai Foreign Language School	Shanghai
57	17	31	DANMING	PENG	Nanjing Foreign Language School	Jiangsu
58	17	31	JUNCHENG	SHEN	High School Affiliated To Nanjing Normal University	Jiangsu
59	17	31	RUIJIE	CHEN	Nanjing Foreign Language School	Jiangsu
60	18	31	ZIXIN	RAO	ChangJun Bilingual School	Hunan
61	18	31	JIANING	LI	Zhengzhou Foreign Language School	Henan
62	18	31	JIAJUN	HU	Jiangxi University of Technology High School	Jiangxi
63	18	31	YIBO	KONG	Zhengzhou Foreign Language School	Henan
64	11	30	NAVEEN	MUKKATT	John Foster Dulles High School	TX
65	12	30	JESSE	CHEN	Arcadia High School	CA
66	13	30	Neeraj	Rattehalli	Menlo Atherton High School	CA
67	13	30	WILLIAM	HUANG	Lynbrook HS	CA
68	15	30	HAOTIAN	HU	High School Attached to Northeast Normal University	Jilin
69	15	30	SIYANT	YOU	Capital Normal University High School	Beijing
70	15	30	YU	CHENG	Capital Normal University High School	Beijing
71	15	30	YUJUN	WU	RDFZ ICC	Beijing
72	15	30	CHENYANG	JIANG	Qingdao No.2 Middle School of Shandong Province	Shandong
73	15	30	YUXUAN	GAO	Beijing No.4 High School ( International Division)	Beijing
74	15	30	YUNFAN	LI	The High School Affiliated to Renmin University of China	Beijing
75	16	30	YU	WU	Guangzhou Zhixin High School	Guangdong
76	17	30	YICHEN	YAO	Nanjing Foreign Language School	Jiangsu
77	17	30	QUANXIN	HUANG	Suzhou High School-SIP	Jiangsu
78	17	30	XING	SICHENG	Nanjing Foreign Language School	Jiangsu
79	17	30	HONGMING	SHUGMING	No.2 High School of East China Normal University	Shanghai
80	17	30	WANGHUA	FENG	Ulink College of Suzhou Industrial Park	Jiangsu
81	17	30	HENGYU	WANG	Ulink College of Shanghai	Shanghai
82	17	30	YANJIE	CHEN	Shanghai Foreign Language School	Shanghai



# AAPT PHYSICS BOWL 2019

PHYSICS EDUCATION

<b>83</b>	18	30	HAOTIAN	YI	Hefei No.1 High School	Anhui
<b>84</b>	00	29	JUWON	MOON	Olympiad Academia	NY
<b>85</b>	00	29	SUNGHOON	KIM	Olympiad Academia	NY
<b>86</b>	00	29	HENRY	LEE	Olympiad Academia	NY
<b>87</b>	03	29	BENJAMIN	CRAIR	Guilford High School	CT
<b>88</b>	06	29	YANG	YUNFAN	The Miami Valley School	OH
<b>89</b>	12	29	Stanley	Wang	Diamond Bar High School	CA
<b>90</b>	12	29	JEFFREY	CHOU	Temple City HS	CA
<b>91</b>	13	29	NEVIN	LIANG	Saratoga High School	CA
<b>92</b>	13	29	DAVID	DAI		CA
<b>93</b>	15	29	YANTONG	LI	RDFZ ICC	Beijing
<b>94</b>	15	29	SHENGJIA	ZHAO	The Experimental High School Attached to Beijing Normal University	Beijing
<b>95</b>	15	29	XIMENG	WANG	RDFZ ICC	Beijing
<b>96</b>	15	29	YIDONG	SONG	Beijing National Day School	Beijing
<b>97</b>	16	29	ZHIYUAN	ZHUANG	Shenzhen College of International Education	Guangdong
<b>98</b>	17	29	YIYANG	FAN	Nanjing Foreign Language School	Jiangsu
<b>99</b>	17	29	ZHIXUAN	FU	Shanghai Starriver Bilingual School	Shanghai
<b>100</b>	17	29	CHILI	DAI	Guanghua Cambridge International School	Shanghai



## TOP 100 OVERALL DIVISION 2 SCORES

Rank	Region	Score	First Name	Last Name	School	Province/State
1	17	40	NIANJIA	SHAO	Changwai Bilingual School	Jiangsu
2	17	40	JIAMENG	ZHU	MacDuffie international school Nanjing Campus	Jiangsu
3	14	39	MICHAEL	LIU		MN
4	15	39	YIMING	LI	Shandong Experimental High School	Shandong
5	17	39	MINYE	ZHU	Nanjing Jinling High School	Jiangsu
6	00	38	ZACHARY	DENG	SpringLight Education Institute	CA
7	17	38	ZILEI	SHAO	Changzhou Senior High School of Jiangsu Province	Jiangsu
8	17	38	ZHENGLI	WU	Hangzhou Foreign Languages School	Zhejiang
9	17	38	XIAOKUN	XIEEF	Changzhou Senior High School of Jiangsu Province	Jiangsu
10	00	37	PATRICK	LIU	SpringLight Education Institute	CA
11	08	37	JASON	GU	Naperville North High School	IL
12	08	37	GEOFFREY	WU	Naperville North High School	IL
13	11	37	ANDREW	LIU	John Foster Dulles High School	TX
14	17	37	KUNWANHUIV	NIU	Nanjing Foreign Language School	Jiangsu
15	17	37	YIXIN	HUANG	Changwai Bilingual School	Jiangsu
16	17	37	JINJING	XUE	Changwai Bilingual School	Jiangsu
17	17	37	XILAI	DAI	Changzhou Senior High School of Jiangsu Province	Jiangsu
18	01	36	SATYA	HOLLA	Science Academy of South TX	TX
19	07	36	KEVIN	LIU	Carmel High School	IN
20	12	36	Bingxu	Meng	Diamond Bar High School	CA
21	15	36	ZEKAI	WANG	Qingdao No.2 Middle School of Shandong Province	Shandong
22	17	36	JIANG	YIJIA	Changzhou Senior High School of Jiangsu Province	Jiangsu
23	17	36	YIZHE	SUN	Shanghai Foreign Language School	Shanghai
24	00	35	MINKI	SHIMZ	Olympiad Academia	NY
25	13	35	JOSEPH	LI	Saratoga High School	CA
26	13	35	NYLE	WONG	University High School	CA
27	14	35	DANIEL	SUN	Interlake HS	WA
28	17	35	KEFAN	CAO	Jiangsu Tianyi High School	Jiangsu
29	17	35	RONG	TENG	No.2 High School of East China Normal University	Shanghai
30	17	35	TIANYU	ZHANG	Shanghai High School	Shanghai
31	02	34	Henry	Tang	Marc Garneau C.I.	ON
32	02	34	Felix	Yu	The Crescent School	ON



**AAPT PHYSICS BOWL 2019**  
PHYSICS EDUCATION

<b>33</b>	02	34	DAVID	TANG	Olympiads School	ON
<b>34</b>	11	34	ETHAN	ZAHID	John Foster Dulles High School	TX
<b>35</b>	13	34	JAMES	CHEN	University High School	CA
<b>36</b>	15	34	XINYANG	CHEN	Qingdao No.2 Middle School of Shandong Province	Shandong
<b>37</b>	17	34	NINGZHI	XU	Nanjing Foreign Language School	Jiangsu
<b>38</b>	17	34	HUIYUAN	ZHANG	Guanghua Cambridge International School	Shanghai
<b>39</b>	00	33	YI WON	KIM	Olympiad Academia	NY
<b>40</b>	00	33	DANIEL	WANG	SpringLight Education Institute	CA
<b>41</b>	04	33	EDDIE	CHEN	West Windsor Plainsboro HS North	NJ
<b>42</b>	04	33	LEO	YAO	West Windsor Plainsboro HS North	NJ
<b>43</b>	04	33	DAVID	XIONG	West Windsor-Plainsboro HS South	NJ
<b>44</b>	04	33	Zeqing	Li	Princeton International School of Math and Science	NJ
<b>45</b>	08	33	SHENGHUA	LIU	Rockford Christian High School	IL
<b>46</b>	11	33	KRISH	SINGAL	John Foster Dulles High School	TX
<b>47</b>	15	33	QIAN	LIN	Beijing 101 Middle School	Beijing
<b>48</b>	15	33	WENHAN	ZHANG	The Experimental High School Attached to Beijing Normal University	Beijing
<b>49</b>	02	32	SEAN	WANG	Point Grey Secondary School	BC
<b>50</b>	02	32	QIU SHI	WANG	Marianopolis College	QC
<b>51</b>	02	32	ERIC	SHEN	Olympiads School	ON
<b>52</b>	04	32	DYLAN	RAPHAEL	Princeton High School	NJ
<b>53</b>	09	32	SAAKETH	VEDANTAM	American Heritage School	FL
<b>54</b>	10	32	STEPHEN	JIANG	Ladue Horton Watkins High School	MO
<b>55</b>	14	32	YanJun	Zhou	Lemania International School Altdorf	Uri
<b>56</b>	14	32	XIDAN	HU	Cardiff Sixth Form College	Cardiff
<b>57</b>	15	32	XINGJIAN	HOU	The High School Affiliated to Renmin University of China	Beijing
<b>58</b>	15	32	JIATAI	LI	The High School Affiliated to Renmin University of China	Beijing
<b>59</b>	17	32	QIZHEN	GE	Ningbo Yinzhou High School	Zhejiang
<b>60</b>	00	31	SEAN	CHEN	San Diego Math Circle	CA
<b>61</b>	02	31	Tony	An	Marc Garneau C.I.	ON
<b>62</b>	05	31	DAVID	WENDT	Island Trees High School	NY
<b>63</b>	08	31	SUHAAS	BHAT	Marshfield High School	WI
<b>64</b>	09	31	Jerry	Zhao	William G Enloe High School	NC
<b>65</b>	12	31	KEVIN	CAI	Temple City HS	CA


**AAPT PHYSICS BOWL 2019**  
 PHYSICS EDUCATION

66	15	31	ZIRUI	LIU	The High School Affiliated to Renmin University of China	Beijing
67	17	31	CHENZHE	SUN	Nanjing Jinling High School	Jiangsu
68	17	31	ZIHAN	ZHANG	No.2 High School of East China Normal University	Shanghai
69	18	31	HANCHENR	XUVZV	No.1 Middle School Affiliated to Central China Normal University	Hubei
70	01	30	MILES	CUA	Science Academy of South TX	TX
71	02	30	YU	LI	Western Canada High School	AB
72	04	30	BENJAMIN	QI	Princeton High School	NJ
73	04	30	DANIEL	CHENG	West Windsor-Plainsboro HS South	NJ
74	07	30	Zhiqi	Liu	St. Anne's-Belfield School	VA
75	07	30	Jerry	Liu	St. Anne's-Belfield School	VA
76	07	30	Qiuqi	Xu	St. Anne's-Belfield School	VA
77	07	30	ANTHONY	OU	Carmel High School	IN
78	09	30	Albert	Zhang	Northview High School	GA
79	09	30	ANDY	WU		FL
80	09	30	ERICK	JIANG		FL
81	09	30	ANDREWW	MCENTAGGART	Wheeler High School	GA
82	11	30	ALEX	LIU	John Foster Dulles High School	TX
83	13	30	SEUNGAH	CHOI	Gachun University	CA
84	15	30	CHEN	SHI	The High School Affiliated to Renmin University of China	Beijing
85	15	30	LIANG	YI	Beijing National Day School	Beijing
86	17	30	JINGCHEN	QIAN	Nanjing Foreign Language School	Jiangsu
87	17	30	ZONGHAOO	QIAN	Yangzhou High School of Jiangsu Province	Jiangsu
88	17	30	ZEYU	MA	Nanjing Foreign Language School	Jiangsu
89	19	30	HANFANG	LUOO	Chongqing Nankai Secondary School	Chongqing
90	00	29	DANIEL	CHOI	Olympiad Academia	NY
91	01	29	SUNAY	JOSHI	Bergen County Academies	NJ
92	01	29	STEVEN	QU	Montgomery Blair High School	MD
93	03	29	Gregory	Zelevinsky	Sharon High School	MA
94	04	29	ETHAN	WEINSTOCK	Bridgewater Raritan HS	NJ
95	07	29	Chengrui	Pan	St. Anne's-Belfield School	VA
96	09	29	MIRCEA DAVID	SILAGHI	West Shore Jr/Sr High School	FL
97	09	29	ARAMIS	TANELUS	American Heritage School of Boca/Delray	FL
98	10	29	KEVIN	LUO	White Station High School	TN
99	11	29	NICHOLAS	TSAO	St. Mark's School of Texas	TX
100	13	29	STANLEYW	WANG	Lynbrook HS	CA

## Highest Scoring Teams: All Regions – Division 1

Rank	Region	Score	School	State/Prov.
1	17	167	Nanjing Foreign Language School	Jiangsu
2	04	165	Gauss School of Math and Science	NJ
3	15	157	Capital Normal University High School	Beijing
4	17	152	Shanghai Foreign Language School	Shanghai
5	17	151	Suzhou High School-SIP	Jiangsu
6	18	151	Zhengzhou Foreign Language School	Henan
7	13	150	Saratoga High School	CA
8	15	142	RDFZ ICC	Beijing
9	15	142	The Experimental High School Attached to Beijing Normal University	Beijing
10	13	141	Lynbrook HS	CA
11	19	141	Chongqing Yucai Secondary School	Chongqing
12	15	139	Qingdao No.2 Middle School of Shandong Province	Shandong
13	17	139	Shanghai High School International Division	Shanghai
14	18	139	Ganzhou No.1 High School	Jiangxi
15	18	138	WHBC of Wuhan Foreign Languages School	Hubei
16	02	136	Olympiads School	ON
17	12	136	Arcadia High School	CA
18	17	135	Guanghua Cambridge International School	Shanghai
19	17	135	Shanghai World Foreign Language Academy	Shanghai
20	16	134	Shenzhen College of International Education	Guangdong
21	17	133	Shanghai Starriver Bilingual School	Shanghai
22	09	132		FL
23	17	131	No.2 High School of East China Normal University	Shanghai
24	12	130	Palos Verdes Peninsula High School	CA
25	17	130	Shanghai Pinghe Bilingual School	Shanghai
26	15	129	Beijing 21st Century International School	Beijing
27	17	129	Suzhou High School of Jiangsu Province	Jiangsu
28	15	128	Beijing National Day School	Beijing
29	16	128	Shenzhen Middle School	Guangdong
30	17	128	Ulink College of Shanghai	Shanghai
31	15	127	Shandong Experimental High School	Shandong
32	15	126	The High School Affiliated to Renmin University of China	Beijing
33	19	125	Xi'an Gaoxin No.1 High School	Shaanxi
34	15	124	Jining Confucius International School	Shandong
35	19	124	International Department of Chengdu Shude High School	Sichuan
36	11	123	Carnegie Vanguard High School	TX
37	12	123	Temple City HS	CA
38	03	122	Guilford High School	CT



**AAPT PHYSICS BOWL 2019**  
PHYSICS EDUCATION

<b>39</b>	15	122	Beijing No.4 High School (International Division)	Beijing
<b>40</b>	15	122	Jinan Foreign Language School	Shandong
<b>41</b>	13	121		CA
<b>42</b>	17	121	Suzhou Foreign Language School	Jiangsu
<b>43</b>	18	120	Hefei No.1 High School	Anhui
<b>44</b>	19	120	Chongqing Nankai Secondary School	Chongqing
<b>45</b>	08	119	Libertyville High School	IL
<b>46</b>	01	118	Oklahoma School of Science and Math	OK
<b>47</b>	07	118	Troy High School	MI
<b>48</b>	14	118	National Mathematics and Science College	England
<b>49</b>	17	118	IVY Experimental High School	Jiangsu
<b>50</b>	16	117	Guangzhou Foreign Language School	Guangdong

## Highest Scoring Teams: All Regions – Division 2

Rank	Region	Score	School	State/Prov.
1	11	161	John Foster Dulles High School	TX
2	17	160	Nanjing Foreign Language School	Jiangsu
3	15	152	The High School Affiliated to Renmin University of China	Beijing
4	17	149	Changzhou Senior High School of Jiangsu Province	Jiangsu
5	02	144	Olympiads School	ON
6	07	143	St. Anne's-Belfield School	VA
7	13	143	University High School	CA
8	17	143	Shanghai Foreign Language School	Shanghai
9	17	141	No.2 High School of East China Normal University	Shanghai
10	15	138	The Experimental High School Attached to Beijing Normal University	Beijing
11	15	138	Qingdao No.2 Middle School of Shandong Province	Shandong
12	01	137	Science Academy of South TX	TX
13	15	137	Beijing National Day School	Beijing
14	04	136	West Windsor Plainsboro HS North	NJ
15	04	135	Princeton International School of Math and Science	NJ
16	04	133	Princeton High School	NJ
17	09	133	American Heritage School	FL
18	15	133	Shandong Experimental High School	Shandong
19	17	132	Changwai Bilingual School	Jiangsu
20	09	131		FL
21	02	128	Western Canada High School	AB
22	04	128	West Windsor-Plainsboro HS South	NJ
23	10	127	Ladue Horton Watkins High School	MO
24	01	126	Bergen County Academies	NJ
25	12	126	Diamond Bar High School	CA
26	17	126	Shanghai High School International Division	Shanghai
27	16	124	Guangzhou Foreign Language School	Guangdong
28	16	123	International Department, The Affiliated High School of SCNU	Guangdong
29	02	122	Marc Garneau C.I.	ON
30	14	121	Philippine Science High School - Main Campus	Metro Manila
31	17	121	Wuxi Big Bridge Academy	Jiangsu
32	17	121	Yangzhou High School of Jiangsu Province	Jiangsu
33	19	121	Chongqing Nankai Secondary School	Chongqing
34	01	120	Montgomery Blair High School	MD
35	15	120	Beijing 101 Middle School	Beijing
36	17	119	Jiangsu Tianyi High School	Jiangsu
37	18	119	Hefei No.1 High School	Anhui



**AAPT PHYSICSBOWL 2019**  
PHYSICS EDUCATION

<b>38</b>	07	118	Carmel High School	IN
<b>39</b>	13	118	Saratoga High School	CA
<b>40</b>	18	118	WHBC of Wuhan Foreign Languages School	Hubei
<b>41</b>	09	117	American Heritage School of Boca/Delray	FL
<b>42</b>	16	117	Shenzhen Foreign Languages School	Guangdong
<b>43</b>	14	116	Pui Ching Middle School	MACAU
<b>44</b>	01	115	Oklahoma School of Science and Math	OK
<b>45</b>	13	115	Monta Vista High School	CA
<b>46</b>	04	114	Union County Magnet High School	NJ
<b>47</b>	03	113	Guilford High School	CT
<b>48</b>	14	113	Mathematical Grammar School	Serbia
<b>49</b>	14	113	Interlake HS	WA
<b>50</b>	08	112	Libertyville High School	IL

## TOP TEN OVERALL DIVISION 1 SCORES: Regions 15 – 19

#	Reg	Score	Student	School	City
1	19	40	KE, XINWEI *	Chongqing Yucai Secondary School	Chongqing
2	17	38	SUN, YUCHEN *	Nanjing Foreign Language School	Jiangsu
3	17	37	LI, YANZHI *	Changzhou Senior High School of Jiangsu Province	Jiangsu
4	16	35	JIANG, ZHENYAO *	Huanggang Middle School Guangzhou Campus	Guangdong
5	17	35	ZHANG, RICHARD J	Shanghai High School International Division	Shanghai
6	19	35	ZHAO, ZEYUAN *	International Department of High School Affiliated To Southwest University	Chongqing
7	15	34	QIU, YICHEN *	Capital Normal University High School	Beijing
8	17	34	XU, HAITAO *	Suzhou High School-SIP	Jiangsu
9	17	34	GU, LI *	Shanghai Foreign Language School	Shanghai
10	15	33	ZHAI, GUANKAI *	Jining Confucius International School	Shandong

## TOP TEN OVERALL DIVISION 2 SCORES: Regions 15 – 19

#	Reg	Score	Student	School	City
1	17	40	SHAO, NIANJIA *	Changwai Bilingual School	Jiangsu
2	17	40	ZHU, JIAMENG *	MacDuffie international school Nanjing Campus	Jiangsu
3	15	39	LI, YIMING *	Shandong Experimental High School	Shandong
4	17	39	ZHU, MINYE *	Nanjing Jinling High School	Jiangsu
5	17	38	SHAO, ZILEI *	Changzhou Senior High School of Jiangsu Province	Jiangsu
6	17	38	WU, ZHENGLI *	Hangzhou Foreign Languages School	Zhejiang
7	17	38	XIE, XIAOKUN *	Changzhou Senior High School of Jiangsu Province	Jiangsu
8	17	37	NIU, KUNWANHUI *	Nanjing Foreign Language School	Jiangsu
9	17	37	HUANG, YIXIN *	Changwai Bilingual School	Jiangsu
10	17	37	XUE, JINJING *	Changwai Bilingual School	Jiangsu

**Note:** Ranking for tied scores is based on the tiebreaker rules... scoring from the end of the test to the front.

**Note:** Those listed in the top 10 Overall are considered Overall Winners and are not reflected for the overall Top Ten Division listings!



## TOP TEN OVERALL DIVISION 1 SCORES: Region 15

#	Reg	Score	Student	School	City
1	15	32	WEN, RUICHENG *	Capital Normal University High School	Beijing
2	15	32	JIN, ZIQIAN *	The Experimental High School Attached to	Beijing
3	15	31	HUANG, CANCAN *	Jining Confucius International School	Shandong
4	15	31	WANG, RUIAN *	Jinan Foreign Language School	Shandong
5	15	31	LIAO, ZHENG *	Beijing 21st Century International School	Beijing
6	15	31	MA, RUIZE*	The Experimental High School Attached to	Beijing
7	15	31	WANG, XUSHU *	RDFZ ICC	Beijing
8	15	31	ZHOU, YUE *	Shandong Experimental High School	Shandong
9	15	31	GUO, YUNRUI *	Capital Normal University High School	Beijing
10	15	30	HU, HAOTIAN	High School Attached to Northeast Normal University	Jilin

## TOP TEN OVERALL DIVISION 2 SCORES: Region 15

#	Reg	Score	Student	School	City
1	15	36	WANG, ZEKAI *	Qingdao No.2 Middle School of Shandong Province	Shandong
2	15	34	CHEN, XINYANG *	Qingdao No.2 Middle School of Shandong Province	Shandong
3	15	33	LIN, QIAN *	Beijing 101 Middle School	Beijing
4	15	33	ZHANG, WENHAN *	The Experimental High School Attached to Beijing Normal University	Beijing
5	15	32	HOU, XINGJIAN *	The High School Affiliated to Renmin University of China	Beijing
6	15	32	LI, JIATAI *	The High School Affiliated to Renmin University of China	Beijing
7	15	31	LIU, ZIRUI *	The High School Affiliated to Renmin University of China	Beijing
8	15	30	SHI, CHEN *	The High School Affiliated to Renmin University of China	Beijing
9	15	30	YI, LIANG *	Beijing National Day School	Beijing
10	15	29	YAO, JIAYI *	Tianjin Foreign Languages School Affiliated to Tianjin Foreign Studies University	Tianjin

**Note:** Ranking for tied scores is based on the tiebreaker rules... scoring from the end of the test to the front.

## TOP TEN OVERALL DIVISION 1 SCORES: Region 16

#	Reg	Score	Student	School	City
1	16	30	WU, YU *	Guangzhou Zhixin High School	Guangdong
2	16	29	ZHUANG, ZHIYUAN *	Shenzhen College of International Education	Guangdong
3	16	28	LI, RUOYU *	Shenzhen College of International Education	Guangdong
4	16	27	WANG, ZIYI	Shenzhen Middle School	Guangdong
5	16	27	CHEN, YUTIAN *	Guangzhou Foreign Language School	Guangdong
6	16	27	CHEN, YIWEI *	The Affiliated High School of SCNU	Guangdong
7	16	26	GONG, HANFU *	Shenzhen Middle School	Guangdong
8	16	26	ZHANG, SHUXING *	Shenzhen College of International Education	Guangdong
9	16	26	CHEN, ERIC	BASIS INTERNATIONAL SCHOOL GUANGZHOU	Guangdong
10	16	26	ZHOU, WENYANG	Shenzhen College of International Education	Guangdong

## TOP TEN OVERALL DIVISION 2 SCORES: Region 16

#	Reg	Score	Student	School	City
1	16	28	FENG, ZHENBANG *	Guangzhou Foreign Language School	Guangdong
2	16	28	LI, HAOZHUO *	Shenzhen Foreign Languages School	Guangdong
3	16	26	CHEN, YIJIA *	International Department, The Affiliated High School of SCNU	Guangdong
4	16	26	LI, PENGQIU *	Vanke Meisha Academy	Guangdong
5	16	26	YANG, JIELING *	The Affiliated High School of SCNU	Guangdong
6	16	26	QIU, YUEHUAN *	International Department, The Affiliated High School of SCNU	Guangdong
7	16	26	WANG, XINYUE *	Majestic international college	Guangdong
8	16	25	LIU, JUNRONG *	Guangzhou Foreign Language School	Guangdong
9	16	25	DENG, JINGWEN *	Guangzhou Foreign Language School	Guangdong
10	16	24	ZHANG, YIHAN *	International Department, The Affiliated High School of SCNU	Guangdong

**Note:** Ranking for tied scores is based on the tiebreaker rules... scoring from the end of the test to the front.

## TOP TEN OVERALL DIVISION 1 SCORES: Region 17

#	Reg	Score	Student	School	City
1	17	33	WANG, YIZHE *	Nanjing Foreign Language School	Jiangsu
2	17	32	WANG, JIAYUE	Nanjing Foreign Language School	Jiangsu
3	17	32	LUO, YICHUAN *	Nanjing Foreign Language School	Jiangsu
4	17	32	GAO, WENSHU *	Shanghai Foreign Language School	Shanghai
5	17	32	YUAN, ZIWEN *	Nanjing Foreign Language School	Jiangsu
6	17	32	ZHANG, ZHIMING *	Nanjing Foreign Language School	Jiangsu
7	17	31	JIZHE, YANGHENG *	Shanghai Foreign Language School	Shanghai
8	17	31	PENG, DANMING *	Nanjing Foreign Language School	Jiangsu
9	17	31	SHEN, JUNCHENG *	High School Affiliated To Nanjing Normal University	Jiangsu
10	17	31	CHEN, RUIJIE *	Nanjing Foreign Language School	Jiangsu

## TOP TEN OVERALL DIVISION 2 SCORES: Region 17

#	Reg	Score	Student	School	City
1	17	37	DAI, XILAI *	Changzhou Senior High School of Jiangsu Province	Jiangsu
2	17	36	YIJIA, JIANG *	Changzhou Senior High School of Jiangsu Province	Jiangsu
3	17	36	SUN, YIZHE *	Shanghai Foreign Language School	Shanghai
4	17	35	CAO, KEFAN *	Jiangsu Tianyi High School	Jiangsu
5	17	35	TENG, RONG *	No.2 High School of East China Normal University	Shanghai
6	17	35	ZHANG, TIANYU *	Shanghai High School	Shanghai
7	17	34	XU, NINGZHI *	Nanjing Foreign Language School	Jiangsu
8	17	34	ZHANG, HUIYUAN *	Guanghua Cambridge International School	Shanghai
9	17	32	GE, QIZHEN *	Ningbo Yinzhou High School	Zhejiang
10	17	31	SUN, CHENZHE *	Nanjing Jinling High School	Jiangsu

**Note:** Ranking for tied scores is based on the tiebreaker rules... scoring from the end of the test to the front.

## TOP TEN OVERALL DIVISION 1 SCORES: Region 18

#	Reg	Score	Student	School	City
1	18	32	XU, HAOZHE *	Hefei No.8 Senior High School	Anhui
2	18	32	TANG, HELIN *	Zhengzhou Foreign Language School	Henan
3	18	31	RAO, ZIXIN *	ChangJun Bilingual School	Hunan
4	18	31	LI, JIANING *	Zhengzhou Foreign Language School	Henan
5	18	31	HU, JIAJUN *	Jiangxi University of Technology High School	Jiangxi
6	18	31	KONG, YIBO *	Zhengzhou Foreign Language School	Henan
7	18	30	YI, HAOTIAN *	Hefei No.1 High School	Anhui
8	18	29	WEN, HAIYI *	WHBC of Wuhan Foreign Languages School	Hubei
9	18	29	LI, YUANFENG *	WHBC of Wuhan Foreign Languages School	Hubei
10	18	29	DANG, HAOTIAN *	Zhengzhou Foreign Language School	Henan

## TOP TEN OVERALL DIVISION 2 SCORES: Region 18

#	Reg	Score	Student	School	City
1	18	31	XU, HANCHEN *	No.1 Middle School Affiliated to Central China Normal University	Hubei
2	18	29	ZHANG, RUIJIE *	Hefei No.8 Senior High School	Anhui
3	18	29	LIU, PEIQI *	No.1 Middle School Affiliated to Central China Normal University	Hubei
4	18	28	JIAO, LONGFEI *	No.1 Middle School of Zhengzhou	Henan
5	18	27	CHEN, DAOSSEN *	WHBC of Wuhan Foreign Languages School	Hubei
6	18	27	ZHU, ZIXI *	Zhengzhou Foreign Language School	Henan
7	18	27	WANG, DEXIN *	Changjun High School of Changsha	Hunan
8	18	25	LU, TAIXI *	Hefei No.1 High School	Anhui
9	18	25	CHEN, YUFENG *	Hefei No.1 High School	Anhui
10	18	25	GUO, WEI *	Zhengzhou Foreign Language School	Henan

**Note:** Ranking for tied scores is based on the tiebreaker rules... scoring from the end of the test to the front.

## TOP TEN OVERALL DIVISION 1 SCORES: Region 19

#	Reg	Score	Student	School	City
1	19	29	XIE, ZHOUHUA	Chongqing Nankai Secondary School	Chongqing
2	19	28	LEE, JUNCHEN *	Xi'an Middle School of Shaanxi Province	Shaanxi
3	19	26	YU, BOYUAN *	Xi'an Gaoxin No.1 High School	Shaanxi
4	19	26	HANXIANG, YU *	Xinjiang Zhongzhi International School	Xinjiang
5	19	26	WANG, MEILING *	Chongqing Yucai Secondary School	Chongqing
6	19	26	HE, YIXIANG *	Xi'an Gaoxin No.1 High School	Shaanxi
7	19	26	HE, ZIYUE *	Chongqing Yucai Secondary School	Chongqing
8	19	26	LI, TING *	International Department of Chengdu	Sichuan
9	19	26	LIU, ZIYU *	Xi'an Gaoxin No.1 High School	Shaanxi
10	19	25	XU, ZHIZHEN	Chengdu Shishi High School	Sichuan

## TOP TEN OVERALL DIVISION 2 SCORES: Region 19

#	Reg	Score	Student	School	City
1	19	30	LUO, HANFANG *	Chongqing Nankai Secondary School	Chongqing
2	19	27	KANG, ZIXUAN *	Urumqi No.1 Middle School	Xinjiang
3	19	26	LI, HAOLIN *	Chengdu Foreign Languages School	Sichuan
4	19	24	YU, JIACAN *	No.1 High School of Guiyang	Guizhou
5	19	24	BIAN, HANZHI *	Chongqing Nankai Secondary School	Chongqing
6	19	24	ZHOU, BINGBIN *	Chongqing Nankai Secondary School	Chongqing
7	19	23	WANG, XIAOYUE *	Chongqing Nankai Secondary School	Chongqing
8	19	20	ZHANG, FENGMING *	Foreign Language School Attached to Sichuan International Studies Language	Chongqing
9	19	20	MING, ZHIYUAN *	Chongqing Yucai Secondary School	Chongqing
10	19	20	SUN, WEIXUAN *	Chongqing Nankai Secondary School	Chongqing

**Note:** Ranking for tied scores is based on the tiebreaker rules... scoring from the end of the test to the front.

## TOP TEN OVERALL DIVISION 1 TEAM SCORES: Regions 15 – 19

#	Reg	Score	School	City
1	17	167	Nanjing Foreign Language School	Jiangsu
2	15	157	Capital Normal University High School	Beijing
3	17	152	Shanghai Foreign Language School	Shanghai
4	17	151	Suzhou High School-SIP	Jiangsu
5	18	151	Zhengzhou Foreign Language School	Henan
6	15	142	RDFZ ICC	Beijing
7	15	142	The Experimental High School Attached to Beijing Normal University	Beijing
8	19	141	Chongqing Yucai Secondary School	Chongqing
9	15	139	Qingdao No.2 Middle School of Shandong Province	Shandong
10	17	139	Shanghai High School International Division	Shanghai

## TOP TEN OVERALL DIVISION 2 TEAM SCORES: Regions 15 – 19

#	Reg	Score	School	City
1	17	160	Nanjing Foreign Language School	Jiangsu
2	15	152	The High School Affiliated to Renmin University of China	Beijing
3	17	149	Changzhou Senior High School of Jiangsu Province	Jiangsu
4	17	143	Shanghai Foreign Language School	Shanghai
5	17	141	No.2 High School of East China Normal University	Shanghai
6	15	138	The Experimental High School Attached to Beijing Normal University	Beijing
7	15	138	Qingdao No.2 Middle School of Shandong Province	Shandong
8	15	137	Beijing National Day School	Beijing
9	15	133	Shandong Experimental High School	Shandong
10	17	132	Changwai Bilingual School	Jiangsu

**Note:** These schools are recognized as “overall” winners for each Division and are removed from that Division’s regional winners pool.

## TOP TEN DIVISION 1 TEAM SCORES: REGION 15

#	Score	School	City
1	129	Beijing 21st Century International School	Beijing
2	128	Beijing National Day School	Beijing
3	127	Shandong Experimental High School	Shandong
4	126	The High School Affiliated to Renmin University of China	Beijing
5	124	Jining Confucius International School	Shandong
6	122	Beijing No.4 High School (International Division)	Beijing
7	122	Jinan Foreign Language School	Shandong
8	113	Northeast Yucai Foreign Language School	Liaoning
9	110	The Second High School Attached to Beijing Normal University(International Campus)	Beijing
10	110	Tianjin Foreign Languages School Affiliated to Tianjin Foreign Studies University	Tianjin

## TOP TEN DIVISION 2 TEAM SCORES: REGION 15

#	Score	School	City
1	120	Beijing 101 Middle School	Beijing
2	105	Beijing No.80 High School	Beijing
3	101	Harbin No.3 High School	Heilongjiang
4	94	Beijing No.2 Middle School	Beijing
5	87	Cambridge International Centre - DaQing No.1 Middle School	Heilongjiang
6	80	Harbin Engineering University A level International Courses Centre	Heilongjiang
7	79	RDFZ ICC	Beijing
8	65	Beijing Etown Academy	Beijing
9	60	Ulink College of Beijing	Beijing
10	60	High School Attached to ShanDong Normal University	Shandong

## TOP TEN DIVISION 1 TEAM SCORES: REGION 16

#	Score	School	City
1	134	Shenzhen College of International Education	Guangdong
2	128	Shenzhen Middle School	Guangdong
3	117	Guangzhou Foreign Language School	Guangdong
4	115	International Department, The Affiliated High School of SCNU	Guangdong
5	112	Guangdong Country Garden School	Guangdong
6	106	Huanggang Middle School Guangzhou Campus	Guangdong
7	106	Shenzhen Foreign Languages School	Guangdong
8	101	The Affiliated International School of Shenzhen University	Guangdong
9	86	Country Garden Silver Beach School	Guangdong
10	86	Vanke Meisha Academy	Guangdong

## TOP TEN DIVISION 2 TEAM SCORES: REGION 16

#	Score	School	City
1	124	Guangzhou Foreign Language School	Guangdong
2	123	International Department, The Affiliated High School of SCNU	Guangdong
3	117	Shenzhen Foreign Languages School	Guangdong
4	102	Shenzhen Middle School	Guangdong
5	96	Shenzhen College of International Education	Guangdong
6	63	Vanke Meisha Academy	Guangdong
7	57	Shenzhen Senior High School	Guangdong
8	40	BASIS INTERNATIONAL SCHOOL GUANGZHOU	Guangdong
9	35	Guangdong Country Garden School	Guangdong
10	31	Sanxin Bilingual School International Department	Guangdong



## TOP TEN DIVISION 1 TEAM SCORES: REGION 17

#	Score	School	City
1	135	Guanghua Cambridge International School	Shanghai
2	135	Shanghai World Foreign Language Academy	Shanghai
3	133	Shanghai Starriver Bilingual School	Shanghai
4	131	No.2 High School of East China Normal University	Shanghai
5	130	Shanghai Pinghe Bilingual School	Shanghai
6	129	Suzhou High School of Jiangsu Province	Jiangsu
7	128	Ulink College of Shanghai	Shanghai
8	121	Suzhou Foreign Language School	Jiangsu
9	118	IVY Experimental High School	Jiangsu
10	115	Wuxi Big Bridge Academy	Jiangsu

## TOP TEN DIVISION 2 TEAM SCORES: REGION 17

#	Score	School	City
1	132	Changwai Bilingual School	Jiangsu
2	126	Shanghai High School International Division	Shanghai
3	121	Wuxi Big Bridge Academy	Jiangsu
4	121	Yangzhou High School of Jiangsu Province	Jiangsu
5	119	Jiangsu Tianyi High School	Jiangsu
6	108	Beijing New Oriental Foreign Language School at Yangzhou	Jiangsu
7	108	Shanghai High School	Shanghai
8	108	Shanghai World Foreign Language Academy	Shanghai
9	106	Nanjing Jinling High School	Jiangsu
10	104	High School Affiliated to Fudan University - WLSA International Program	Shanghai

## TOP TEN DIVISION 1 TEAM SCORES: REGION 18

#	Score	School	City
1	139	Ganzhou No.1 High School	Jiangxi
2	138	WHBC of Wuhan Foreign Languages School	Hubei
3	120	Hefei No.1 High School	Anhui
4	117	Hefei No.8 Senior High School	Anhui
5	99	The Affiliated Middle School of Henan Normal University	Henan
6	99	Wuhan Foreign Languages School	Hubei
7	95	Wuhan No.6 High School	Hubei
8	92	Hefei Thomas School	Anhui
9	92	Maple Leaf International School-Wuhan	Hubei
10	89	Yiling Tianwen International School	Hubei

## TOP TEN DIVISION 2 TEAM SCORES: REGION 18

#	Score	School	City
1	119	Hefei No.1 High School	Anhui
2	118	WHBC of Wuhan Foreign Languages School	Hubei
3	104	Hefei No.8 Senior High School	Anhui
4	94	No.7 Middle School of Zhengzhou CAC	Henan
5	85	Ningxiang Country Garden School	Hunan
6	83	Yichang Cambridge International School	Hubei
7	82	No.1 Middle School Affiliated to Central China Normal University	Hubei
8	80	ChangJun Bilingual School	Hunan
9	78	Zhengzhou Foreign Language School	Henan
10	70	Maple Leaf International School-Wuhan	Hubei

## TOP TEN DIVISION 1 TEAM SCORES: REGION 19

#	Score	School	City
1	125	Xi'an Gaoxin No.1 High School	Shaanxi
2	124	International Department of Chengdu Shude High School	Sichuan
3	120	Chongqing Nankai Secondary School	Chongqing
4	113	Xi'an Middle School of Shaanxi Province	Shaanxi
5	113	Chengdu Foreign Languages School	Sichuan
6	105	Xi'an Tieyi High School	Shaanxi
7	102	Foreign Language School Attached to Sichuan International Studies Language	Chongqing
8	96	Chengdu Shishi High School	Sichuan
9	94	Xinjiang Zhongzhi International School	Xinjiang
10	92	Chongqing Depu Foreign Language School	Chongqing

## TOP TEN DIVISION 2 TEAM SCORES: REGION 19

#	Score	School	City
1	121	Chongqing Nankai Secondary School	Chongqing
2	95	Chongqing Yucai Secondary School	Chongqing
3	66	Foreign Language School Attached to Sichuan International Studies Language	Chongqing
4	59	Chongqing Depu Foreign Language School	Chongqing
5	59	Chengdu Shishi High School	Sichuan
6	45	The High School Attached to Northwest Normal University	Gansu
7	27	Urumqi No.1 Middle School	Xinjiang
8	26	Chengdu Foreign Languages School	Sichuan
9	24	No.1 High School of Guiyang	Guizhou
10	19	Chengdu Experimental Foreign Languages School	Sichuan